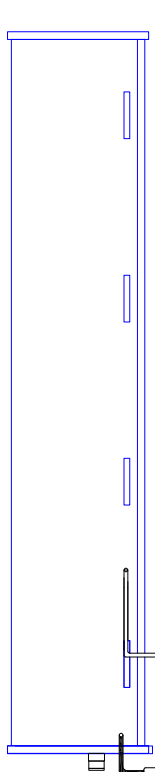
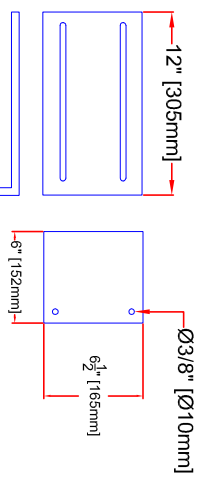
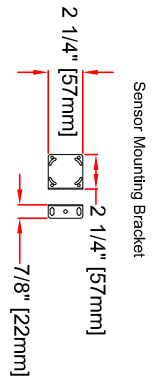


Photosensor w/ 5' cord & mounting bracket. Sensor factory set with 15 second off delay

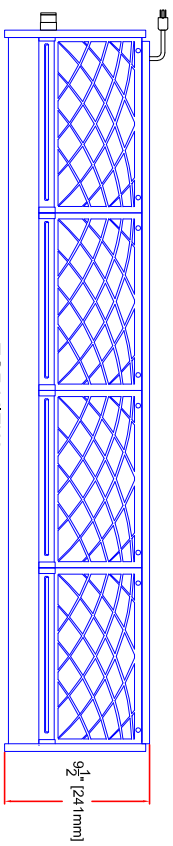
6' Grounded plug



BACK VIEW

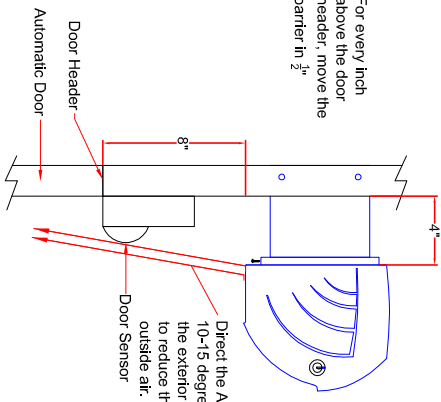


EXTENSION BRACKET 2 PER UNIT
See Owners Manual for Details

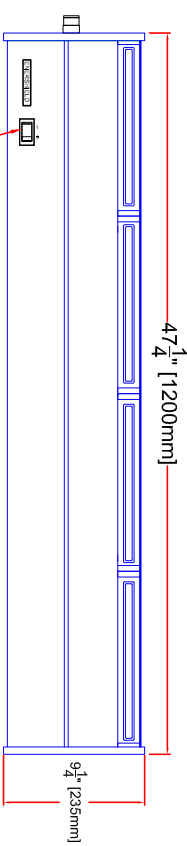
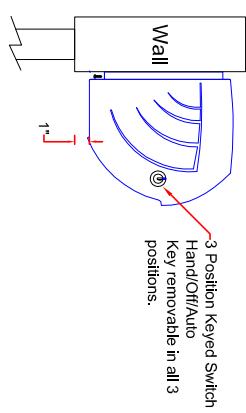


TOP VIEW

For every inch above the door header, move the barrier in ¹/₂"



Min 2" of clearance to ceiling.



FRONT VIEW

CSA Certified

ENERSHIELD INDUSTRIES LTD

16821-113 AVENUE
EDMONTON, ALBERTA T5M 2X2
PH (780) 482-4662 FAX (780) 482-4074
E-mail: info@enershield.ca
www.enershield.ca

AVAILABLE IN WHITE, BLACK AND ALUMINUM FINISH

VOLTAGE 120V/1/60 Hz
2 Speed Motors TEAO
2 @ 1/5 hp = (2/5 hp total)
Total FLA = 3.5 amps

Designed for optimal efficiency at 7' (2133mm) with balanced building pressure. Consult dealer for varying applications.

4 Blowers

MICROSHIELD

Project:	Air Velocity Hi/Low (fpm)	(m/s)
Engineer:	Air Volume Hi/Low (cfm)	(l/s)
Tag:	Total hp/watts	
	Weight lbs/Kg	

MCS-48-AP-K

	3651-3223/18.5-16.4
	1950-1721/920-812
	2/5 hp/298W
	39.6 lbs/18 Kg