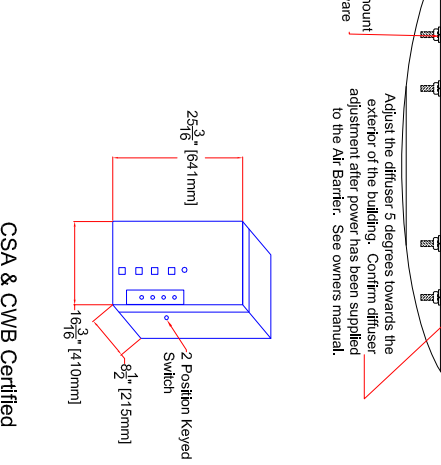
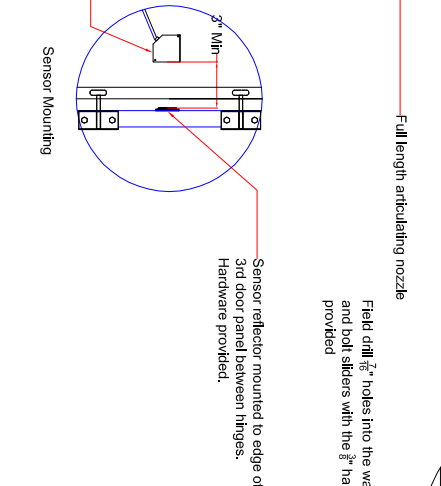
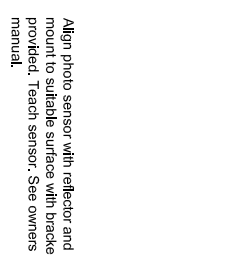


- Note:**
- 1) Top Air Intake standard. Front intake optional.
 - 2) Frames must be joined in the field, prior to lifting into place. Hardware is provided.
 - 3) Consult factory for installation on standard lift OH doors or roll up doors.
 - 4) Factory set 5 sec soft starter ramp up time.
 - 5) Controls: Lockable NEMA 1 Enclosure 640mm x 410mm x 215mm.
 - 6) 20 Hp soft starter, 2 position keyed switch, external resets; 120V control circuit, photo sensor to activate and deactivate air barrier. Electrical is by others.
 - 7) Installation height not to exceed 1" above door jamb.
 - 8) Barrier is to be mounted on the buildings interior.
 - 9) Minimum clearance for air intake 10".
 - 10) 4 extendable installation sliders provided.
 - 11) 2 Wall Mounts provided.
 - 12) Air Barrier is capable of spanning door without the need for intermediate support.
 - 13) Air Barrier must fully span the door opening.



ENERSHIELD INDUSTRIES LTD
 16821-113 AVENUE
 EDMONTON, ALBERTA T5M 2X2
 PH (780) 482-4662 FAX (780) 482-4074
 info@enershield.ca
 E-mail: WWW.enershield.ca

ULTRASHIELD AIR BARRIER	
208/3/60	460/3/60
Motor (S)	Motor (S)
2 @ 10 hp total	2 @ 10 hp total
56.6 amps FLA	24.4 amps FLA

ULTRASHIELD	
Air Velocity (Fpm) (m/s)	6500/33
Air Volume (cfm) (l/s)	31,800/15,008
Total hp/Kw	20/14.92
Weight lbs/Kg	1,276 lbs/579Kg

Project: US-192
Engineer:
Tag:

CSA & CWB Certified