



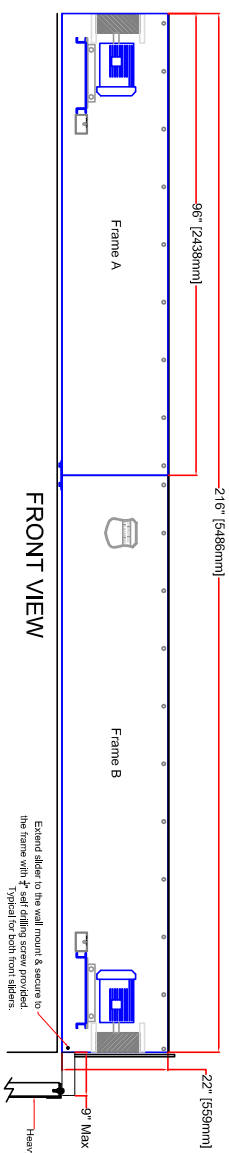
10 Hp TEFQ Motor @ selected 3 phase voltage

TOP VIEW

10 Hp TEFQ Motor @ selected 3 phase voltage

Electrical connection by others

Electrical connection by others



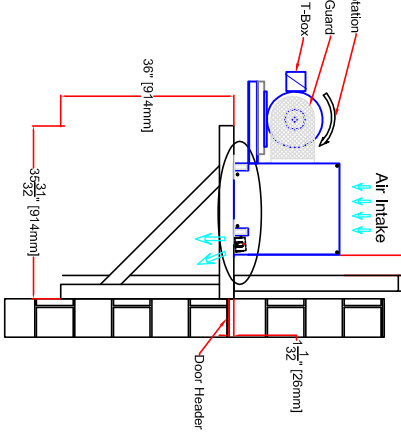
FRONT VIEW

Expand slider to the wall mount & secure to the frame with 1/4" self-drilling screw provided. Typical for both front sliders.

Heavy Duty Wall Mount

Vertical or High Lift OH Door

Min of 3" clearance between barrier and open door. Door not shown.



Air Intake

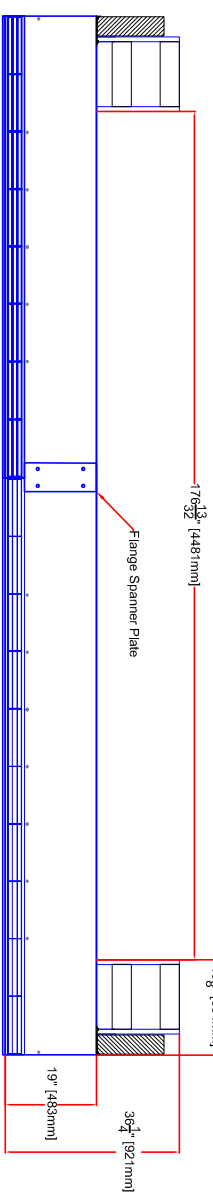
Door Header

14-1/4" Self Drilling Screw

Slider Mounting Detail

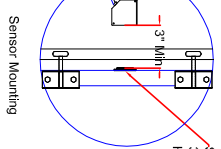
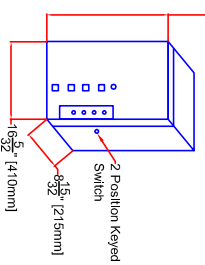
Field drill 5/8" holes into the wall mount and bolt sliders with the 5/8" hardware provided

Adjust the diffuser 5 degrees towards the exterior of the building. Confirm diffuser adjustment after power has been supplied to the Air Barrier. See owners manual.



BOTTOM VIEW

Flange Spanner Plate



Align photo sensor with reflector and mount to suitable surface with bracket provided. Teach sensor. See owners manual.

Sensor reflector mounted to edge of 3rd door panel between hinges. Hardware provided.

- Note:
- 1) Top Air Intake standard. Front intake optional.
  - 2) Frames must be joined in the field and flange spanner plate installed prior to lifting the Air Barrier into position. Hardware is provided.
  - 3) Consult factory for installation on standard lift OH doors or roll up doors.
  - 4) Factory set 5 sec soft starter ramp up time.
  - 5) Controls: Lockable NEMA 4 Enclosure 640mm x 410mm x 215mm, with 20 Hp soft starter, 2 position keyed switch, external resets, 120V control circuit, photo sensor
  - 6) to activate and deactivate air barrier. Electrical is by others.
  - 7) 20 Gauge G-90 Galvanized metal cladding.
  - 8) Installation height not to exceed 1" above door jamb.
  - 9) Barrier is to be mounted on the buildings interior.
  - 10) Minimum clearance for air intake 10".
  - 11) 4 extendable installation sliders provided.
  - 12) 2 Wall Mounts provided.
  - 13) Air Barrier must fully span the door opening.

CSA & CWB CERTIFIED

ENERSHIELD INDUSTRIES LTD  
16821-113 AVENUE  
EDMONTON, ALBERTA T5M 2X2  
PH (780) 482-4662 FAX (780) 482-4074  
E-mail: info@enershield.ca  
www.enershield.ca

ULTRASHIELD AIR BARRIER			Blowers
VOLTAGE			
2008/3/60	460/3/60	575/3/60	9
Motor (s)	Motor (s)	Motor (s)	
2 @ 10 hp total	2 @ 10 hp total	2 @ 10 hp total	
56.6 amps FLA	24.4 amps FLA	19.2 amps FLA	

Model #	US-216
Air Velocity (fpm) (m/s)	6500/33
Air Volume (cfm) (l/s)	35,775/16,884
Total hp/kw	20 hp/14,920W
Weight lbs/kg	1,280lbs/582Kg

Project: \_\_\_\_\_  
Engineer: \_\_\_\_\_  
Tag: \_\_\_\_\_