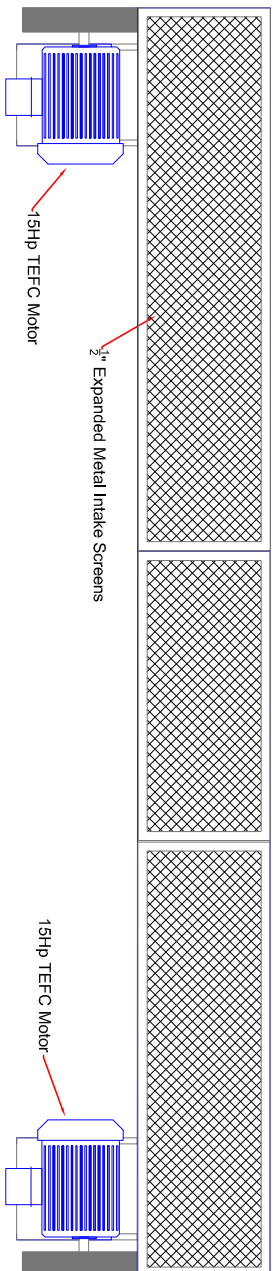
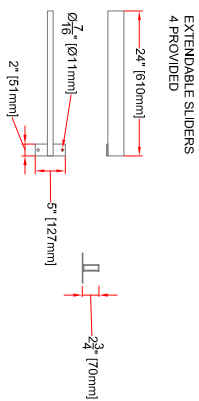
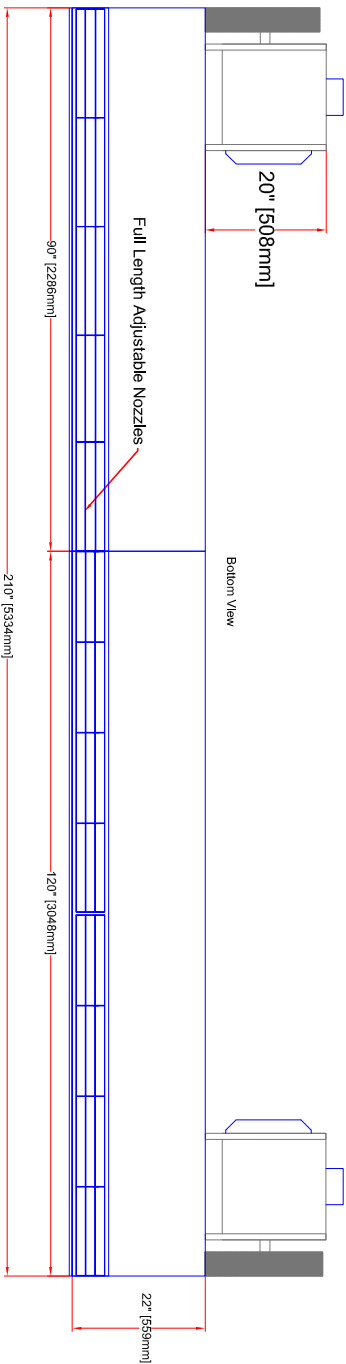
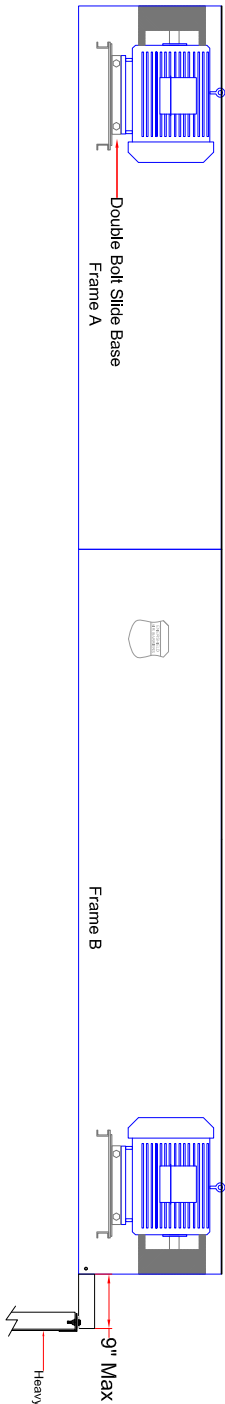


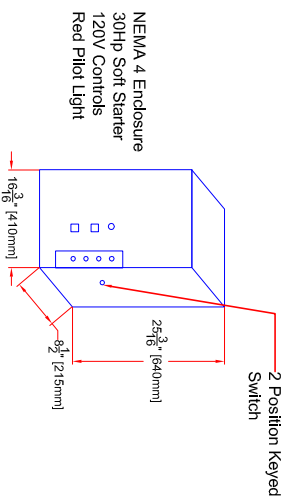
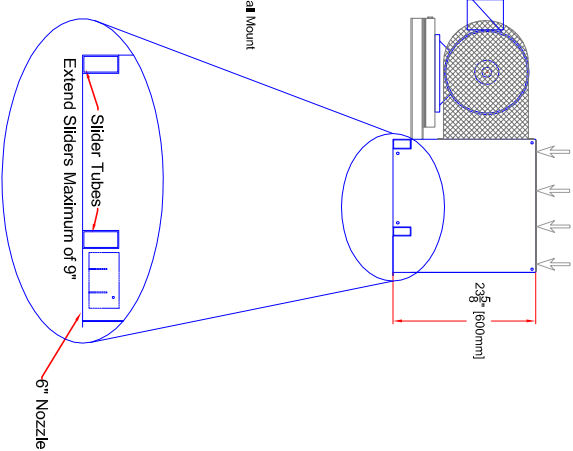
Top View



Front View



Air Intake



CSA & CWB Certified

ENERSHIELD INDUSTRIES LTD

16821-113 AVENUE
 EDMONTON, ALBERTA T5M 2X2
 PH (780) 482-4662 FAX (780) 482-4074
 E-mail: info@enershield.ca
 WWW. ENERSHIELD.CA

ENERSHIELD AIR BARRIER

VOLTAGE	VOLTAGE	VOLTAGE	Blowers
208V 3phase 60 Hz	460V 3phase 60 Hz	575V 3phase 60 Hz	7
Motor (s) 2 @ 15 hp total	Motor (s) 2 @ 15 hp total	Motor (s) 2 @ 15 hp total	
77.4 amps FLA	36.0 amps FLA	29.0 amps FLA	

2 Heavy Duty Wall Mounts Provided

Xtremeshield		XS-210	
Air Velocity (fpm) (m/s)	7500/38.1		
Air Volume (cfm) (l/s)	41,720/19,680		
Total hp/watts	30 hp/22,380W		
Weight (lbs/Kg)	1663 / 756		