



ENERSHIELD Air Barriers

Specializing in Energy Management Climate Control Systems

Energy Saving Technology

Manufacturing & Design

16821 – 113 Avenue, Edmonton Alberta T5M 2X2

Phone (780) 482-4662 • Fax (780) 482-4074

Toll Free – 1-866-464-3667

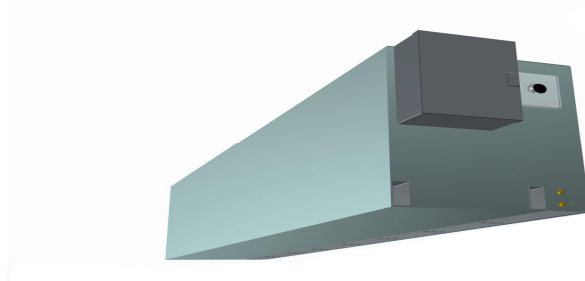
www.enershield.ca

Durashield DS-96 - Air Barrier Specifications

Enershield Durashield model DS-96 is 96" / 2439 mm in length. Powder coated 1/8" steel frame construction & 20 gauge G.90 sheet metal jacket, c/w acoustic insulation with acrylic anti-microbial coating. Provided with powder coated telescopic sliders & wall brackets. Top air intake is standard (optional front air intake available upon request). Integral NEMA 1 control panel incorporating photo electric cell door sensor for automatic activation upon door opening. Operating characteristics: 4 forward curved double inlet blowers providing Air Velocity = 4500 fpm, Air Volume = 11,300 cfm, Electrical: 208/1/60 Motors: 4 @ 1/2 hp = 2 hp total (1492Watts): 208/1/60 = 3.7 amps each = 14.8 amps FLA (alternate voltages available see chart below). Variable motor speed control standard at 208/1/60 only. Weight = 400 lbs. Decibel rating is 71 dB at a distance of 10' from the unit.

CSA Certified. Warranty: 2 Yrs. Parts
Made In Canada, CSA CWB & Certified

Model	DS-96
Cabinet Length in./mm	96" 2439 mm
Height x Width	20" x 17 5/8" 508mm x 448mm
Weight	400 lbs. 182 kgs.
Fans/Blowers	4
Motors - TEAO	4
Horse Power/Motor	1/2 hp 373 watts
Total Horsepower	2 hp 1492 watts.
Decibels	71 dB
Max FPM at Nozzle	4500 fpm 22.9 m/s
CFM at Nozzle	11,300 cfm 5,333 l/s
Outlet Velocity Uniformity	95%



Available Motors			
Operating Voltage:	575/1/60	460/1/60	208/1/60
Amp Draw (per motor) FLA	1.1 Amps ea = 4.4 FLA	1.35 Amps ea = 5.4 FLA	3.7 Amps ea = 14.8 FLA
Single speed, TEAO, Class B insulation, permanent split capacitor, 1/2" double flat shaft, ball bearing, reversible, all angle mount, internally thermally protected, self resetting, maintenance free * Variable motor speed control only available at 208/1/60			